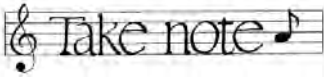




# League of Women Voters of Rogue Valley

## VOTERS VOICE

January 2014



- ❖ Important January LWVRV meeting, see p. 1
- ❖ Human Trafficking meeting, see p. 4
- ❖ New membership category



### JANUARY GENERAL MEETING

#### BETWEEN THE COVERS....

General Meeting	1
Exec. Committee's Remarks/ League Leaders	2
Board Meeting Minutes Summary	3
Human Trafficking Meeting/December Meeting Summary and Pictures	4
Thank You/LWVRV Discussion Group	5
Our Libraries Article/ New Membership Category	6
Action Chair/ Invitation to Join	7
LWVRV Calendar	8

It is very important that members of LWVRV attend our first event of the New Year 2014, our Program Planning Workshop on Thurs. Jan.9. 11:30-1:30 at the OEA Building. We will be looking at our local and national positions to see how we could use them. Let's have a lively discussion and some powerful questioning on what issues we want to focus on and whether we should have studies on other important topics.

You can find the local positions in your Membership Directory. Think about...should we support a ballot issue that creates a non-partisan election for County Board? We have a position on that issue.

National positions can be found at the LWVUS website: [www.lwv.org/content/public-policy-positions](http://www.lwv.org/content/public-policy-positions).

Joan Rogers, Normary Barrett, Diane Shockey and others will lead the discussion. Snacks will be served. Bring your own drinks.

\* \* \* \* \*

What is a powerful question? You probably know them when you hear or read them. Score the following questions on 1-10 scale (10 being the highest) on which would be the most powerful.)

1. What time is it?
2. Did you take a shower?
3. What possibilities exist that we haven't thought of yet?
4. What does it mean to be ethical?

Would you say powerful questions are ones that transcend many boundaries?

For fun, try placing the following words in a pyramid with the most powerful at the top and least at the bottom and then think of questions you can ask using them.

who? what? when? where? which? yes/no questions why? how?

*The League of Women Voters, a nonpartisan political organization, encourages the informed and active participation of citizens in government, works to increase understanding of major public policy issues, and influences public policy through education and advocacy.*

# EXECUTIVE COMMITTEE COMMENTS

## ‘WHAT’S NEW?’

News Years’ greetings to you all. This month it is my pleasure to be the member of the Executive Committee to communicate with you. **AND** a busy month it is. Please be aware of all the short-term commitments you can join to help your League keep rolling ahead.

**Here are some of the opportunities for you to serve on a limited basis ; your ideas are appreciated.**

1. A Development Committee is forming to evaluate whether to continue the fruit sales or replace it with another fund raising project. Got some ideas?
2. January is Nominating Committee time. Would you consider being a member? Two meetings at the most.
3. January is also the time for creating our budget. Do you have ideas of projects worthy of using our money?
4. Help register people to vote for the May election. More coming on whether we can support the ballot measure of just register voters.
5. Help Marylou with the Library Issue; she needs a Co-chair

If you are interested in serving, contact an Exec. Committee member.

*(continued on p. 3)*

## LEAGUE LEADERS

### OFFICERS

**Iris Milan , Executive Committee**

exec@lwwroguvalley.org, 541-897-0406

**Barbara Davidson, Executive Committee**

exec@lwwroguvalley.org, 541-245-2729

**Carole Levi, Executive Committee**

exec@lwwroguvalley.org, 541-664-9943

**Kathleen Donham, Executive Committee**

exec@lwwroguvalley.org, 541-772-5044

**Carol Ingelson, Secretary**

secretary@lwwroguvalley.org, 541-245-6380

**Willie Bijon, Treasurer**

treasurer@lwwroguvalley.org, 541-227-9599

### DIRECTORS

**Vacant— Voter Services**

**Joan Rogers, Arrangements**

reservations@lwwroguvalley.org, 541-531-3523

**Carole Levi, Voters Voice Editor**

newsletter@lwwroguvalley.org

**Barbara Davidson, Observer Corps/**

**Programs**

observercorps@lwwroguvalley.org

**Kathleen Donham, Publicity**

publicity@lwwroguvalley.org

**Diane Shockey, Action**

action@lwwroguvalley.org, 989-501-0013

**Normary Barrett, Membership Committee chair/**

**Bulletin Mailing**

membership@lwwroguvalley.org, 541-772-7127

**Olena Black, Web administrator**

webadmin@lwwroguvalley.org, 541-261-1929

### OFF BOARD

**Nancy Swan, Historian**

historian@lwwroguvalley.org, 541-770-1689

**Shiena Polehn, Hospitality**

hospitality@lwwroguvalley.org, 541-773-4177

**Grapefruit fundraiser,**

grapefruit@lwwroguvalley.org, members:

**Kathleen Donham, Grapefruit fundraiser**

**Agnes Chirgwin, Grapefruit fundraiser, 541-773-3234**

**Carol Ingleson, Grapefruit fundraiser**

**Vanya Sloan, Nominating Committee**

nomcom@lwwroguvalley.org, 541-531-8457

**Carol Ingelson, Nominating Committee**

nomcom@lwwroguvalley.org

**Shiena Polehn, Nominating Committee**

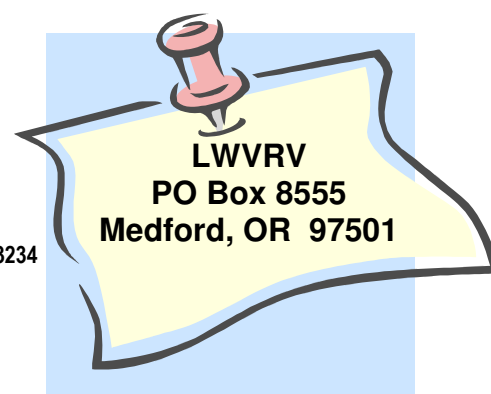
nomcom@lwwroguvalley.org,

**Joan Rogers, Nominating Committee**

nomcom@lwwroguvalley.org

**Agnes Chirgwin, Nominating Committee**

nomcom@lwwroguvalley.org



**LWVRV Voice Mail:  
(541) 772-5044**

<http://lwwroguvalley.org>

# LWVRV BOARD MEETING MINUTES SUMMARY

Tuesday, December 17, 2013

OEA Building, 2495 South Pacific Highway, Medford, OR

**Call to Order** at 9:40am by Executive Committee member Carole Levi

Present: Olena Black, Kathleen Donham, Carol Ingelson, Carole Levi, Iris Milan, Joan Rogers, Marylou Schnoes, Diane Shockey

**Approval of Minutes:** Nov. 19, 2013 minutes: approved as corrected.

Motion by Olena Black to reinstall the summary of minutes into Voters Voice with footnote to contact any board member if full minutes is desired. Motion approved.

Treasurer's report given and accepted.

Grapefruit fundraiser report given by Carol Ingelson. A motion was made and approved to form a development committee to evaluate continuing the grapefruit fundraiser and if not, how would the LWVRV raise money.

Diane Shockey reported on the meeting she and Barbara Davidson had with County Commissioner Skundrick. She will write a thank-you note to the Grange for their most helpful efforts with our fruit sale.

Approval of a motion of the LWVRV 's support of and assistance in the local presentation of "*Human Trafficking Awareness in the Rogue Valley*"

~Carol Ingelson, Secretary

## EXECUTIVE COMMITTEE COMMENTS, (continued from p. 2)

### Fruit Sale Fundraiser

A heartfelt thanks for the committee that took on the Fruit Sale Fundraiser this year when our former chairperson of seven years, Lorraine Werblow retired. This year was especially challenging with the unusual and unexpected snow and ice. I know our customers were grateful to the League for our extra effort to make sure everyone received their fruit or held it until it could be picked up. I personally received thanks from many of those who ordered from me. Our success was definitely a group effort: Special thanks to: The Grange Co-op for making sure the fruit didn't freeze by allowing us to keep it and ourselves inside their store; thanks to our members for selling so many orders and making special deliveries with their husbands on icy roads to help those who couldn't do their own pick up:

Lorraine and Bernie Werblow, Agnes Chirgwin and her husband, Carol Ingelson, Marianne Wallace, Dan Milan, Carole Levi and Kathleen Donham's handyman, the people at the Grange and those I inadvertently left out. Of course we would be most appreciative of our loyal customers. We made less than expected as we were not told of the price increase until the orders were dropped off by the vendor. Nevertheless, we raised \$2,000. 2014 is an election year; the money will help us with Voter's Service activities.

Lorraine and Bernie Werblow, Agnes Chirgwin and her husband, Carol Ingelson, Marianne Wallace, Dan Milan, Carole Levi and Kathleen Donham's handyman, the people at the Grange and those I inadvertently left out. Of course we would be most appreciative of our loyal customers. We made less than expected as we were not told of the price increase until the orders were dropped off by the vendor. Nevertheless, we raised \$2,000. 2014 is an election year; the money will help us with Voter's Service activities.

~Iris Milan, Executive Committee Member

# HUMAN TRAFFICKING in the ROGUE VALLEY

There will be a meeting on Human Trafficking in the Rogue Valley to be held Jan. 22, 7:00-8:30 at the First Presbyterian Church, Walker & Siskiyou Blvd, (1615 Clark St) in Ashland.

We were asked to be support the event, along with First Presbyterian Church of Ashland, Ashland High School Interact Club, Ashland Interfaith Clergy Circle, American Association of University Women Ashland Branch, League of Women Voters Rogue Valley, The Maslow Project, Amnesty International Southern Oregon Chapter, Trinity Episcopal Church, Temple Emek Shalom, First Congregational United Church Christ, The Rogue Valley Peace Choir, and Hearts with a Mission. The LWVRV Board voted to join the list of sponsors. The meeting came out of a concern of women in a book group who were reading, Half the Sky by Nickalas Kristoff. It was about trafficking in other parts of the country. They investigated and found it was also prevalent in the Rogue Valley. If you are interested in being a part of a car pool to Ashland, contact Iris.

## DECEMBER MEETING SUMMARY

At our Dec. meeting we heard from speakers who covered the Cradle to Career aspects of our State Study on Education. Mary Curtis Gramley from the Family Nurturing Center gave us a good look at the needs of young children which their program is fulfilling. However, not all who could benefit from the program are enrolled. There is a waiting list. We in turn gave the children gift items that were needed.

Liz Shelby from SOU explained the restructuring of the University System. The meeting was well attended and we thank Kathleen Donham for providing the soup to warm us and Joan Rogers for setting up and arranging for dessert.

## DECEMBER MEETING in PICTURES



## A BIG THANK YOU to LWVRV MEMBERS

Who could not be impressed by the table full of warm clothes destined for the children-receiving treatment at the Family Nurturing Center? We learned from one of our speakers, Mary-Curtis Gramley, the Executive Director of this center, that many of the kids arrive in clothes not warm enough for this chilly weather. All were new garments of exceptional quality and chosen thoughtfully. The items included a beautiful child-size , hand-made quilt. Thank you so much – you helped continue a December tradition of inviting one of our Rogue Valley agencies and helping their clients out in the Christmas season.

Finally, I want a special word of thanks to go to Kathleen Donham, who made the delicious chicken noodle soup, which warmed us up quickly and those members who brought cookies for “dessert”. As always, Joan Rogers was there to set up the coffee and tea, and bring the bread and cookies which were much appreciated. Well done, Joan.

Greetings for the season and the coming year from your Hospitality ( and Bag) lady,

*~Shiena Polehn*

## NEWLY-FORMING LWVRV DISCUSSION GROUP



League Studies are really important in making democracy work. However, a number of members feel we don't get into the meat of the issues or have time for discussion. Some members have voiced concern that we don't have enough time to hear what our members are involved in, what current concerns we have, or the concerns may or may not qualify for study. We want time to come together to hear and share what other members are working on or concerned about now.

There is a desire by some members to begin an in- depth discussion group.

- ♦ Are you interested?
- ♦ What issues interest you?
  - ♦ Is the fourth Thursday a good day? Is the fourth Friday a good day?

We will have our first meeting January 24, 2014, 10am, at the OEA building, 2469 S. Pacific Hwy., Medford, to decide what issues we want to learn more about and discuss and make a schedule.

If you are interested in joining this group, or just want to hear how this group organizes, please email your response to:

[newsletter@lwwrogu山谷.org](mailto:newsletter@lwwrogu山谷.org)

## Our Libraries: To Save or Dis-Assemble?

**The levy.** As you may know, on May 20th a property tax levy will be passed or defeated in Jackson County. If passed, we'll have a new county-wide library district with funding for all 15 library branches. If defeated, the process of closing the libraries will begin with all the satellite branches closing this next fiscal year and the main Medford library closing the next.

**The PAC.** A Political Action Committee can raise & spend money on behalf of an issue. At this time, a PAC to pass the levy is being formed & is called "**Libraries for All Jackson County**". As of this writing, very little information regarding the PAC's charter, leadership, commitments to transparency, methods of decision-making and the role they hope to have in any new library district are given on their website: [www.librariesforalljacksoncounty.org](http://www.librariesforalljacksoncounty.org)

And because of these unknowns, many of us, haven't yet wholeheartedly backed them. But the PAC is still in its infancy. Stay tuned.

Oddly enough, it appears at this time, that the PAC is not yet embracing our suggestion to get library users registered to vote. They do have a long list of other volunteer tasks that promote their organization & campaign, which you can see at their website.

**What we do best.** Is, of course, getting people registered to vote and becoming more informed voters. We'd like to see some form of voter registration/levy information booth staffed (probably by us & other lovers of the library) at the entrances to all the branches, especially leading up to the deadline for registration, April 29th. And the same info out to the groups that use the library meeting rooms.

**What you can do right now.** Please consider joining several others of us in a LWVRV Library Committee, if you haven't already given your name to Marylou Schnoes. You may do this, by adding your name & contact information to the list in the Library Committee file, in "the cloud" at

[https://drive.google.com/file/d/0B1nmr\\_8vwm-neldOaXILZUNBd2s/edit?usp=sharing](https://drive.google.com/file/d/0B1nmr_8vwm-neldOaXILZUNBd2s/edit?usp=sharing)

If you're used to poking around documents to edit them, even if you've never used a file "in the cloud", please give it a try. Don't forget to use the down arrow to "download" the file, then "open" it, and then "enable editing". Otherwise, send your name, email address & phone number to [marylouschnoes@gmail.com](mailto:marylouschnoes@gmail.com) (If you don't do email, we might not be able to contact you in a timely manner. Sorry.)

Because of family obligations, Marylou cannot commit to chairing this committee. If you're passionate about the library and are willing to co-chair this committee, please let Marylou know via email. Realize that to make a co-chairmanship work, you must be absolutely committed to complete, documented communication with and consideration for other co-chairs and committee members.

*This is a busy time of year, so we'll send you a reminder in early January.*

We can do this!!! Thanks much.

*~Marylou Schnoes*

### New Membership Category

We now have a new category for limited membership. Try Us Out and become a LWVRV Friend! A person showing interest in the League could be asked by a members to consider a year of being a "friend" at the cost of \$15. The person would be mentored to help find out his/her interests and encourage participation. This could make it easier to recruit students. Do you know someone who you could ask to be a friend?

## ACTION CHAIR

On December 10th executive committee person Barbara Davidson and Action Chair Diane Shockey met with Jackson County Commission Chair Don Skundrick. The meeting was to raise awareness for the need for Jackson County Board and Commission openings to be better advertised to the public

Currently, Jackson County only posts the openings on the Jackson County website. This practice makes it hard for anyone who does not specifically seek out the Jackson County website to know if there are any openings and how to apply for a position.

Barbara brought an example of newspaper advertising by the Medford City Council. The article was an invitation for interested individuals to apply for board and commission openings and listed all the positions that needed to be filled as well as how to apply.

Commissioner Skundrick seemed open to the recommendations and stated he would pass the suggestions on to the person charged with posting the openings.

The LWVRV's hope in the outcome of this meeting is that more transparency in Jackson County government will lead to a more active citizen participation.

*~Diane Shockey, Action Chair*

## INVITATION to JOIN

2013/2014 League of Women Voters of Rogue Valley

### *Membership Application*

Name \_\_\_\_\_

Address: \_\_\_\_\_ City: \_\_\_\_\_

Zip \_\_\_\_\_ Phone \_\_\_\_\_ e-mail \_\_\_\_\_

Single membership — \$56.00      Spouse membership — \$28.00      Full-time Student— \$28.00


**\*May we publish the above information in our LWVRV Membership Directory? \* Y N**

**Check all areas below in which you are most interested in attending a branch meeting:**

- Land use planning.    Local Government    Transportation  
 Children at Risk    Education    Election Issues  
 Health Issues    Environment    National Issues  
 Observer Corps    Other \_\_\_\_\_

Please send your completed membership application, along with your check, to:

**LWVRV, P.O. Box 8555, Medford, OR, 97501**

Mon	Tue	Wed	Thu	Fri	Sat/Sun
		1 	2	3	4/5
6	7	8	9 LWVRV General Meeting, <i>see p. 1</i>	10	11/12
13	14	15	16	17	18/19
20 Martin Luther King Day	21 LWVRV Board Meeting	22 Human Trafficking Meeting, <i>see p. 4</i>	23	24 LWVRV Discussion Group, <i>see P.5</i>	25/26
27	28	29	30	31 Chinese New Year	



**LOOKING AHEAD**

January 24, 2014 LWVRV - discussion group meeting, (see p. 5)

February 13, 2014 LWVRV - general meeting on county budget and the extension service

March 13, 2014 LWVRV - general meeting on library funding

April 10, 2014 - concensus meeting on agriculture and voters service discussion

May 8, 2014 - LWVRV Annual Meeting